

vñylasá

Brochure
Luxury Vinyl Tile

AccuFloors®

In recent years the levels of Luxury Vinyl Tile specification have increased as an alternative for floor coverings.

The AccuFloors® collection is specifically designed for a wide range of interior spaces. The designs with effect of wood, stones or carpets are ideal for different sectors such as education, health, corporate, commercial, entertainment, etc., since they have a practical, resistant and hygienic presentation.

The mix of this collection contains different shades, which can be combined perfectly and create a variety of designs.

AccuFloors® floors are ideal for medium and high traffic in interiors, standing out for their advantages of aesthetics and great performance.



C03
Washington
Maple



M05
Cedar



K15
Poplar



K04
Chocolate



K26
Teca



K06
Mahogany



K14
Roble
Eslavonia



M07
Agapia
Grey



The images are illustrative, the colors may vary in the final sample.

Dimensions: 6 x 36 in (0,1524 x 0,9144 m)

sq. ft. per carton: 45 sq. Ft. (4.18 m²)

AccuWood[®]

The AccuWood[®] line is a mixture of wood designs with which extraordinary patterns can be created.





M01
Natural



M02
Canary
Pine



M04
Roble



D01
Albar



M12
Arden



K18
Elm



M08
Carvalho



M11
Roble
Oscuro



D02
Aspen



M09
Sapelly



D03
Wengue



K12
Carrasco



K13
Negral



K17
Eyoum



K01
Militar
Wood

The images are illustrative, the colors may vary in the final sample.



K28
Banack



K07
Toscana



M16
Olmo



K11
Cenizo



K16
Ébano

AccuStone[®]

The images are illustrative, the colors could vary in the final sample.





P02 Pearl



P07 Topacio



P10 Granite



K19 Antico



P05 Citrino



P06 Arena



P08 Óxido



P09 Óxido Café



P18 Ocre



P20 Arenisca



P15 Boj Claro



P17 Boj Oscuro

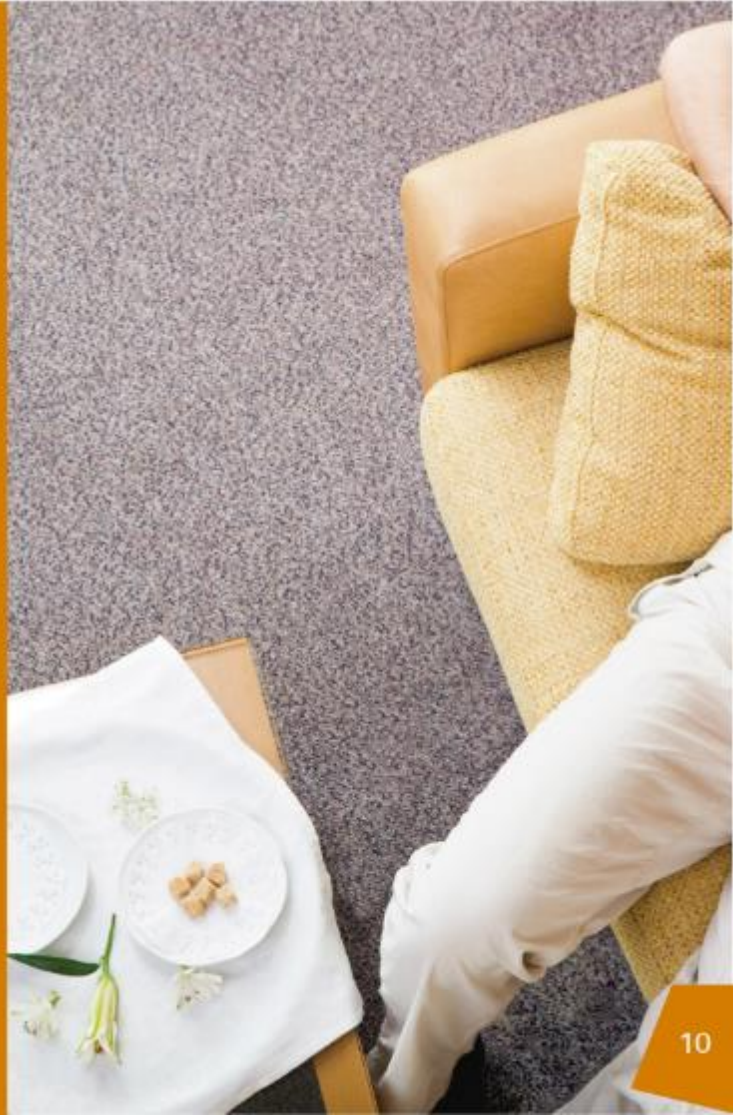


P16 Endrino

The images are illustrative, the colors may vary in the final sample.

AccuCarpet[®]

AccuCarpet[®] is a line of flooring with which you can achieve the appearance of carpets.

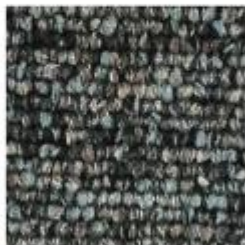




A01 Moka



A06 Acero



A12 Azul



A05 Crepúsculo



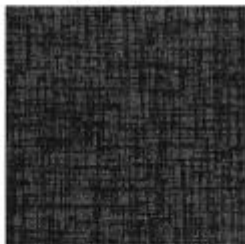
A03 Granate



K23 Platino



K24 Gris Siberia



K25 Iris



K21 Grafito



K22 Titanio

The images are illustrative, the colors may vary in the final sample.

Dimensions: 18 x 18 In (0.457 x 0.457 m)

sq. ft. per carton: 27 sq. Ft. (2.5 m²)

Commercial

- Meets commercial and residential requirements for its performance 34/43 - EN 685.
- Developed for residential use, in offices, schools, hospitals, gyms, hotels, entertainment centers, etc.
- High levels of quality in its manufacture.

Technicall

- Products certified with the Floorscore® seal, as it meets strict interior air quality (IAQ) requirements of the program developed by the Resilient Floor Covering Institute (RFCI)
- Low structural weight.
- They have a good dimensional stability.
- They are self-extinguishing floors, since they prevent the spread of fires.
- With a wear layer that favors the long life of the product.
- Easy maintenance and installation.
- With anti-skid, antistatic, thermal and acoustic properties.

Esthetic

- Balanced color palette ranging from warm tones to gray tones, creating harmonious and welcoming environments in any area where you want to place the floors.
- They are floors that allow to create natural spaces and comfortable places with modern designs.

AccuFloors®



Description	AccuWood®		AccuStone® y AccuCarpet®	
Size	6 x 36 in (0,1524 x 0,9144 m)		18 x 18 in (0,457 x 0,457 m)	
Thickness				
Total Thickness	1/8 in (3.1	2.0 mm	1/8 in (3.1	2.0 mm
Wear Layer Thickness	0.5 mm	0.3 mm	0.5 mm	0.3 mm
Packaging				
Pieces per carton	30		12	
sq. ft. per carton	45 sq. Ft. (4.18 m ²)		27 sq. Ft. (2.5 m ²)	
weight per carton	49 lb (22 kg)	38 lb (17 kg)	27.55 lb (12.5 kg)	21.33 lb (9.7 kg)
Performance classification	Class III, Type B / 34/43- ASTM F 1700			
Critical Radiant Flux	Class I, 0.45 or more watts/cm ² - ASTM E 648			
Smoke Chamber	450 or less - ASTM E 662			
Resistance to Chemicals	No notable change present - ASTM F 925			

Sweep, damp mop and/ or vacuum the floor assuring the removal of all grit, dirt and foreign material, the surface must be flat without irregularities or fissures. It must be ensured that the PH is between 7 and 9, and the relative humidity must be maximum 3%. Values outside these limits could cause loss of adhesion in the glue and delamination and warpage of the floor.

The adhesive used to install the floor covering Accufloors is látex 2060 water base adhesive and is aplied with a fine notching trowel (1/8").

It is necessary to let dry from 30 to 45 minutes, depending on the environmental conditions to install and avoids delamination and warp problems. For wet, cold or without ventilation areas, it must be necessary longer drying time.

During the installation is important to join perfectly the ends of the pieces and not leave separations between pieces to avoid dust and dirty enter in those spaces, propicing humidity.



AccuWood[®]

vnylasa[®]

www.vnylasa.com

Canela 229, Col., Granjas México, C.P. 08400, CDMX
Tel. 58031300